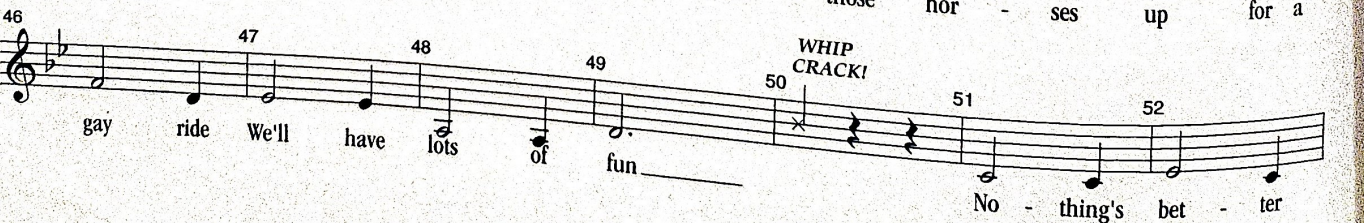
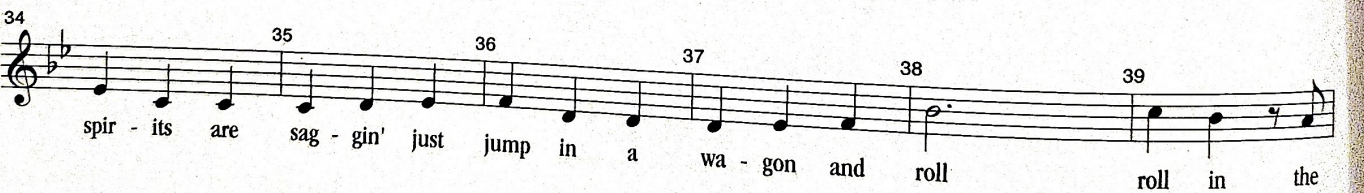
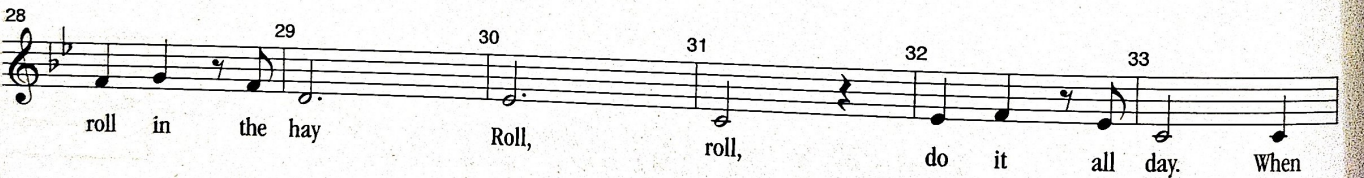
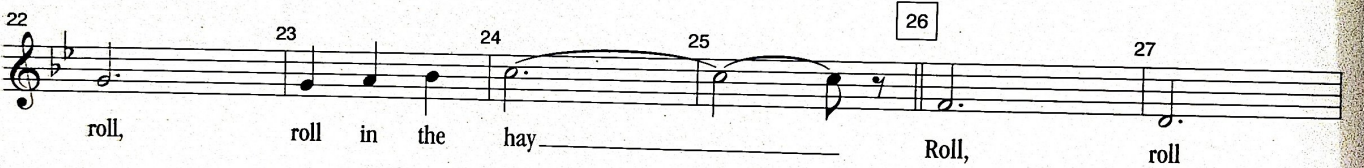
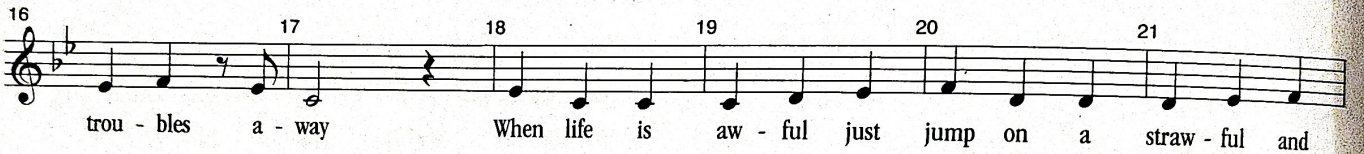
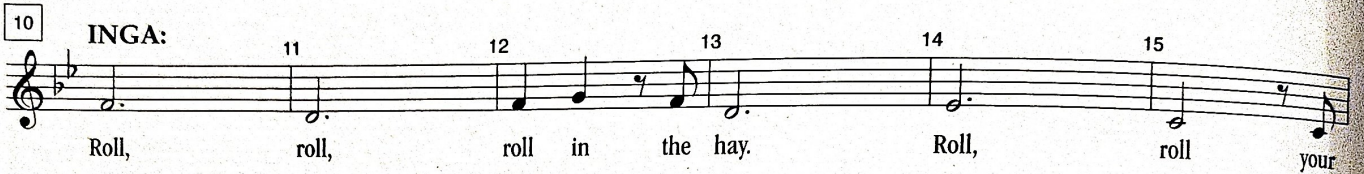
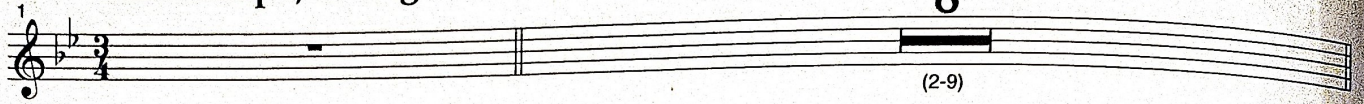


Roll In The Hay

5

Waltz tempo, with gusto

8



53 54 55 56 57 58
 than a hay - ride un - der - neath the sun

59 60 61 62 63
 Roll, roll Roll In The Hay Some

64 65 66 67 68
 times love finds a way You might steal a kiss from an

69 70 71 72 73 74
 un - wit - ting miss who's not too re - sis - tant to play So let's

75 76 77 78 79 80
 roll roll roll Roll In The

Play 4X

Vamp

81 82 83 84
 Hay!

INGA, IGOR & FREDERICK:

IGOR:

85 88
 Roll Roll In The Hay! We'll go

89 90 91 92 93 94
 up the path, down the back up the path then

95 97 98 99 100
 down the hill we'll go up and down and up and down and

127 128 129 130 131 132

lay ee dee yo-del lay - ee - dee lay - ee - dee lay - ee - dee

133 134 135 136

yo-del lay-dee yo-del lay-dee yo-del lay-dee yo-del lay-dee yo-del dee!

Vamp

2 (137-138) 8 (139-146)

Vamp

7 (147-153) 154 4 (155-158)

159 **INGA:** 160 161 162 163 164

Yo-del lay-dee ho dee day Yo-del lay-dee ho day - dee Yo-del lay - dee yo-del lay - dee

165 166 167 168 169 170

Yo-del lay-dee yo-del dee Yo-del lay-dee yo-del lay - dee Ho-del yo-del lay-dee yo-del lay - dee ho-del

171 172 173 174 175 **Very fast!** 176

yo-del lay - dee Roll in the dee. Yo-del lay-dee ho dee day

177 178 179 180 181 182

Yo-del lay-dee ho day - dee Yo-del lay ee dee Yo-del lay ee dee Yo-del lay-dee yo-del dee

183 184 185 186

Yo - del lay - dee yo - del - lay - dee yo - del ho - del - Yo - del lay - dee yo - del - lay - dee yo - del ho - del -

187 188 189 190 **IGOR & FRED:**

Yo - del lay - dee yo - del - lay - dee yo - del ho - del - Yo - del lay - dee yo - del - dee! So let's

191 192 193 194

roll, roll, roll, we'll all

195 196 197 198 199 200 **INGA:**

roll roll roll Come with me and

201 202 203 204 205 206

roll

IGOR & FRED:

Roll - lin' roll - lin' roll - lin' roll - lin' roll - lin'

207 208 209 210 211

Roll In The Hay!

FRED:

roll - lin' Roll In The Hay!

212 213 214 215 216

roll - lin'